

# International Baccalaureate Diploma Programme



## Strawberry Crest High School

Website: [strawberrycrest.mysdhc.org](http://strawberrycrest.mysdhc.org)

Follow us on twitter!

@schs\_ib

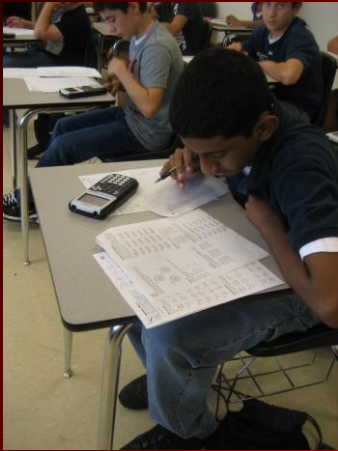
# What is the IB Programme?

“The IB Program allows me to learn how to excel academically in rigorous coursework while also learning to be a better citizen. It incorporates a global perspective into my academic studies so that I learn about different cultures and my place in the world.”

Sayona Jose, SCHS IB Senior



- History
- Magnet
- Course Work



# Academics



## 4 years of each:

English

World Language

French or Spanish

Mathematics

Social Studies

Science

Biology, Chemistry & Physics

## Other courses:

Inquiry Skills

Theory of Knowledge

IB Elective

Second Science

Psychology

Economics

Art

Traditional Electives

# Special Features

- World-wide curriculum
- Rotating schedule
- Daily Study Hall
- Inquiry Skills Class – 9<sup>th</sup> grade support
- Highly Qualified & Dedicated Faculty
- IB Coordinator & IB Counselor
- Transportation options for select students
- Tutoring available



# IB Learner Profile



- IB Programmes aim to develop internationally minded people who are striving to become:

Inquirers

Knowledgeable

Thinkers

Communicators

Risk-takers

Principled

Caring

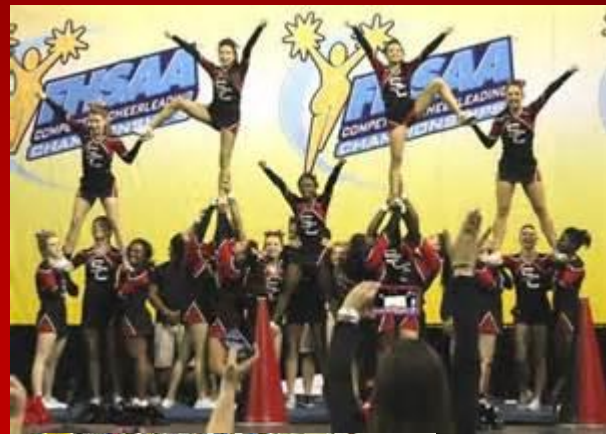
Open-minded

Well-balanced

Reflective

# The Full High School Experience

- Homecoming Game and Dance
- Pep Rallies
- Clubs
- Sports
- Concerts & Plays
- Community Events
- Field trips
- Jobs
- Lifelong Friends!



# Who chooses IB?



- Students who are highly motivated
- Students who are academically talented
- Students willing to challenge themselves in all subjects
- Students who want to experience a world-wide curriculum
- Students who wish to surround themselves with others with similar goals

# Common Questions

Is it really that hard? / ...that much work?

What about Dual Enrollment, Advanced Placement and FLVS?

- Can we take them too?
- Which do colleges prefer?

How do I know if it's right for me?





# 10 Reasons



why the IB Diploma Programme (DP) is ideal preparation for university

1



## It increases academic opportunity

Research\* shows that DP graduates are much more likely to be enrolled at top higher education institutions than entrants holding other qualifications.

2



## IB students care about more than just results

Through creativity, action, service (CAS) you learn outside the classroom and develop emotionally and ethically as well as intellectually.

3



## It encourages you to become a confident and independent learner

For example, the extended essay requires independent research through an in-depth study.

6



## The IB encourages critical thinking

Learn how to analyse and evaluate issues, generate ideas and consider new perspectives.

5



## Graduates are globally minded

Language classes encourage an international mindset, key for increasingly globalized societies.

4



## It's an international qualification

The DP is recognized globally by universities and employers.

7



## DP students have proven time management skills

Take good study habits and strong time management to further education and the working world.

9



## Subjects are not taught in isolation

Theory of Knowledge (TOK) classes encourage you to make connections between subjects.

10



## It encourages breadth and depth of learning

You are able to choose courses from six subject groups and study subjects at different levels.

8



## It assesses more than examination techniques

Learn to understand, not just memorize facts or topics and prepare for exams.

\*Based on IB research - [www.ibo.org/research](http://www.ibo.org/research)

© International Baccalaureate Organization 2014  
International Baccalaureate® | Baccalauréat International® | Bachillerato Internacional®



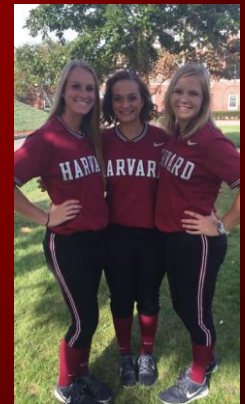
# Why IB?

## Students are...

- more engaged in high school
- more prepared for college
- more likely to succeed in college
- Colleges recognize the value of IB and seek IB students (Program vs. Courses)

# Benefits of IB

- Strong college applicants
  - Average accept rate of IB students into university/college is 22% higher than total population
- IB students more likely to be admitted to selective universities
  - 84% of IB students attend their top choice university/college
- College Credit
- Scholarship opportunities



# University Acceptance Rates

| University or College                 | Average Acceptance Rate | IB Acceptance Rate |
|---------------------------------------|-------------------------|--------------------|
| University of Florida                 | 42%                     | 82%                |
| Florida State University              | 60%                     | 92%                |
| Brown University                      | 9%                      | 18%                |
| Columbia University                   | 9%                      | 13%                |
| Harvard University                    | 7%                      | 10%                |
| New York University                   | 30%                     | 57%                |
| University of Miami                   | 30%                     | 72%                |
| Cornell University                    | 18%                     | 31%                |
| Duke University                       | 16%                     | 28%                |
| University of Pennsylvania            | 14%                     | 24%                |
| Yale University                       | 7%                      | 18%                |
| University of Central Florida         | 47%                     | 90%                |
| University of California -Los Angeles | 23%                     | 48%                |
| Princeton University                  | 8%                      | 16%                |

# Why Strawberry Crest?

- An “A” School!
  - Six of the last ten years
- 99% IB Pass Rate!
- Students say:
  - They feel safe.
  - They find the school community welcoming and kind.
  - They feel supported by the staff.
  - They like the variety of clubs / sports accessible to them.



# EXTRACURRICULAR ACTIVITIES AT STRAWBERRY CREST

## CLUBS

- Student Government
- Chargerthon
- Future Farmers of America
- Various Honor Societies
- Crest Critique
- Code Club
- Mu Alpha Theta
- Speech and Debate
- Ignite Bible Club
- Chess
- Future Business Leaders of America
- Fellowship of Christian Athletes
- GSA
- Drama
- Dance
- Future Investors
- Various Service Clubs: Assist, Trendsetters, Seeds of Hope, United Relief

## SPORTS

- Football
- Cheerleading
- Volleyball
- Cross Country
- Swimming
- Golf
- Track
- Soccer
- Flag Football
- Baseball
- Softball
- Tennis
- Basketball
- Wrestling



# ALSO AT STRAWBERRY CREST....

## INTERESTING ELECTIVES

- Agriculture/ FFA
- Veterinary Assisting
- Fire Fighting Academy
- Culinary Operations
- Yearbook
- ROTC
- Web Design / Computers
- Band / Chorus / Orchestra
- Drama
- Art / Sculpture / Photography
- Team Sports /Weight Training / Soccer / Basketball
- World Religions / History of Vietnam / Holocaust / Law Studies / Philosophy / Psychology



# Entrance Requirement:

Passing grade in Algebra I (Honors or regular)

## Selection Criteria:

### GPA

Academic subjects from 7<sup>th</sup> grade and first semester of 8<sup>th</sup> grade

### Test Scores & Assessments

Due to the COVID pandemic & cancellation of standardized assessments, HCPS will utilize the most recent FSA standardized test results for academic criteria (most likely Spring 2019 for most students).

# Application Information



- Current 8<sup>th</sup> Graders:
  - Can apply to ANY of the 5 IB schools
    - Up to 2 total IB Schools
    - Up to 5 total programs
  - Transportation only available to “residential” IB School
- Current 9<sup>th</sup> Graders:
  - A limited number of students will be admitted beginning with the 10<sup>th</sup> grade year.



Apply online:

October 29 through December 11

[hillsboroughschools.org/magnet](https://hillsboroughschools.org/magnet)

